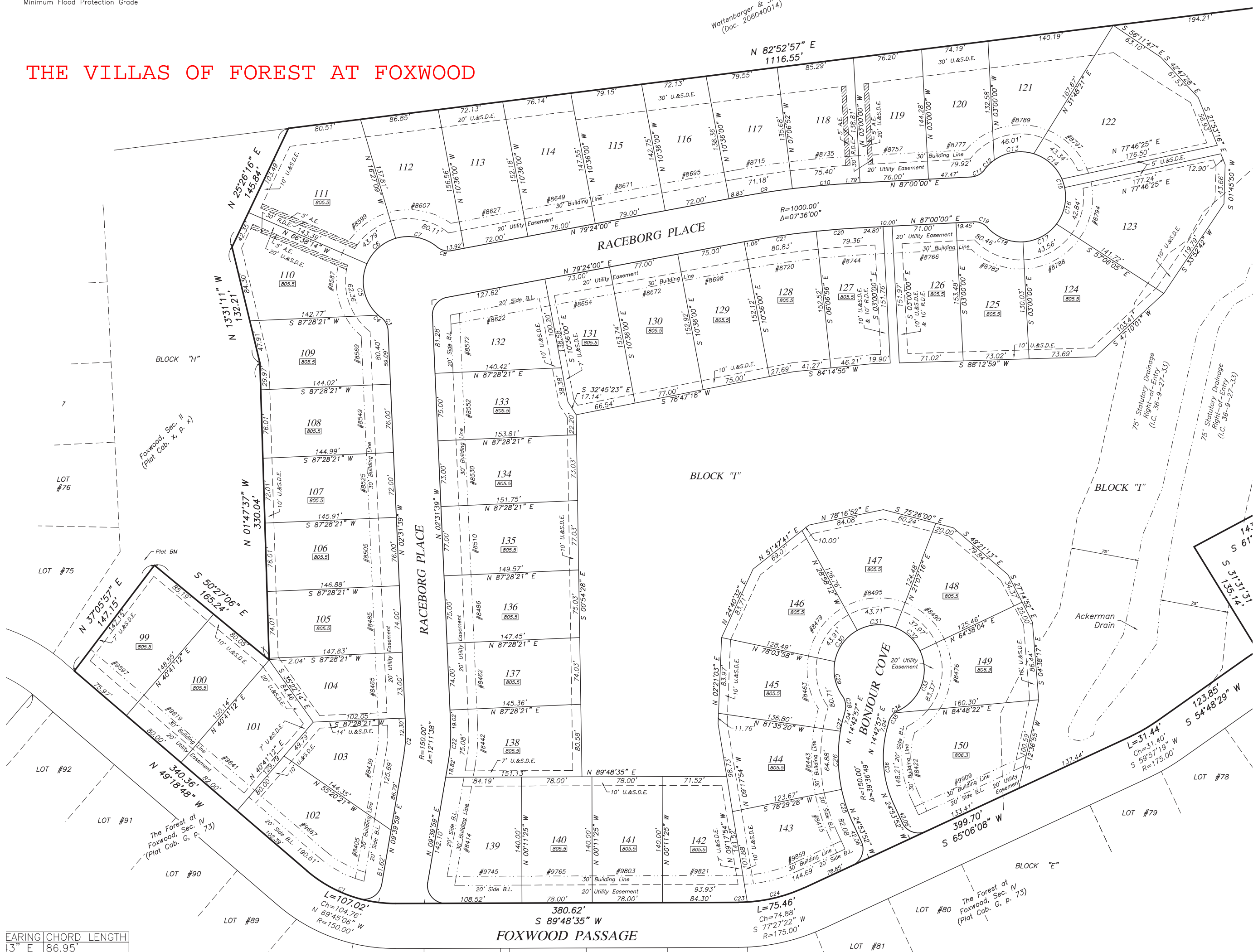


THE VILLAS OF FOREST AT FOXWOOD



Wattenbarger & Co.
(Doc. 206040014)

FOXWOOD, SEC. II
(Plat. Cab. X, P. 4)

THE FOREST AT
FOXWOOD, SEC. III
(Plat. Cab. G, P. 73)

THE FOREST AT
FOXWOOD, SEC. IV
(Plat. Cab. G, P. 73)

380.62'
S 89°48'35" W
FOXWOOD PASSAGE

L=75.46'
Ch=74.88'
S 77°27'22" W
R=175.00'

L=31.44'
Ch=31.40'
S 59°57'19" W
R=175.00'