

Mission Hill Drive

16.316 ACRES  
Southwest Allen High School Bldg. Corp.  
(Doc. 960013132)

Brae P

LOT #19  
LOT #18  
LOT #17  
LOT #16  
LOT #15  
LOT #14

Whispering Meadows, Section 1  
(Plat. Cob. "B", P. 90)

Whispering Meadows  
(Plat. Cob. "B", P. 90)

TRACT "A"

10' I & M Distribution Easement  
(Doc. 920046633)

2000 ACRES  
Traylor  
(Doc. 205016156)

Anchor  
(Doc. 980019720)

0.62 ACRES  
Voges  
(Doc. 204023590)

0.606 ACRES  
Patterson  
(Doc. 950050712)

0.60 ACRES  
Hamilton  
(Doc. 900034679)

0.606 ACRES  
Vogde  
(Doc. 206042040)

0.41 ACRES  
Vogde  
(Doc. 206042040)

0.029 ACRES  
State of Indiana  
(Doc. 206078720)

BBDH & Associates, L  
(Doc. 205020848)

20' San. Sewer Exmt.  
(Doc. 930009984)

14' I & M and GTE Easement  
(Doc. 75002691)

5' Rebar Fnd.  
0.4"E, 0.4"S, Dn. 0.2'

0.474 ACRES  
Pomante  
(Doc. 204019923)

1.663 ACRES  
Berleben  
(Doc. 207002970)

0.303 ACRES  
Marshall  
(Doc. 204049591)

0.025 ACRES  
Amberg  
(Doc. 980019720)

0.025 ACRES  
Amberg  
(Doc. 980019720)

0.025 ACRES  
Amberg  
(Doc. 980019720)

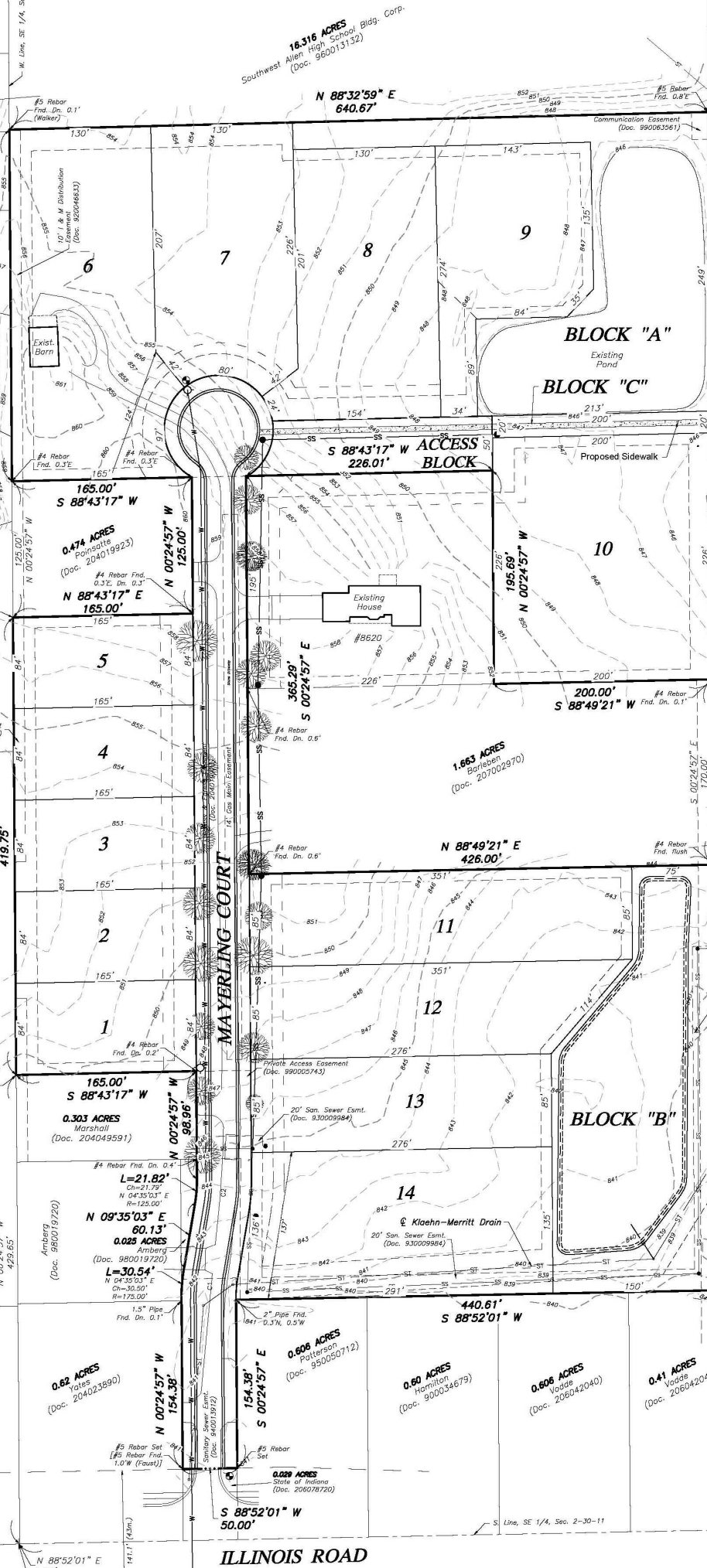
0.025 ACRES  
Amberg  
(Doc. 980019720)

0.025 ACRES  
Amberg  
(Doc. 980019720)

0.025 ACRES  
Amberg  
(Doc. 980019720)

0.025 ACRES  
Amberg  
(Doc. 980019720)

0.025 ACRES  
Amberg  
(Doc. 980019720)



ILLINOIS ROAD

2644.  
N 88°52'  
(Basis of B