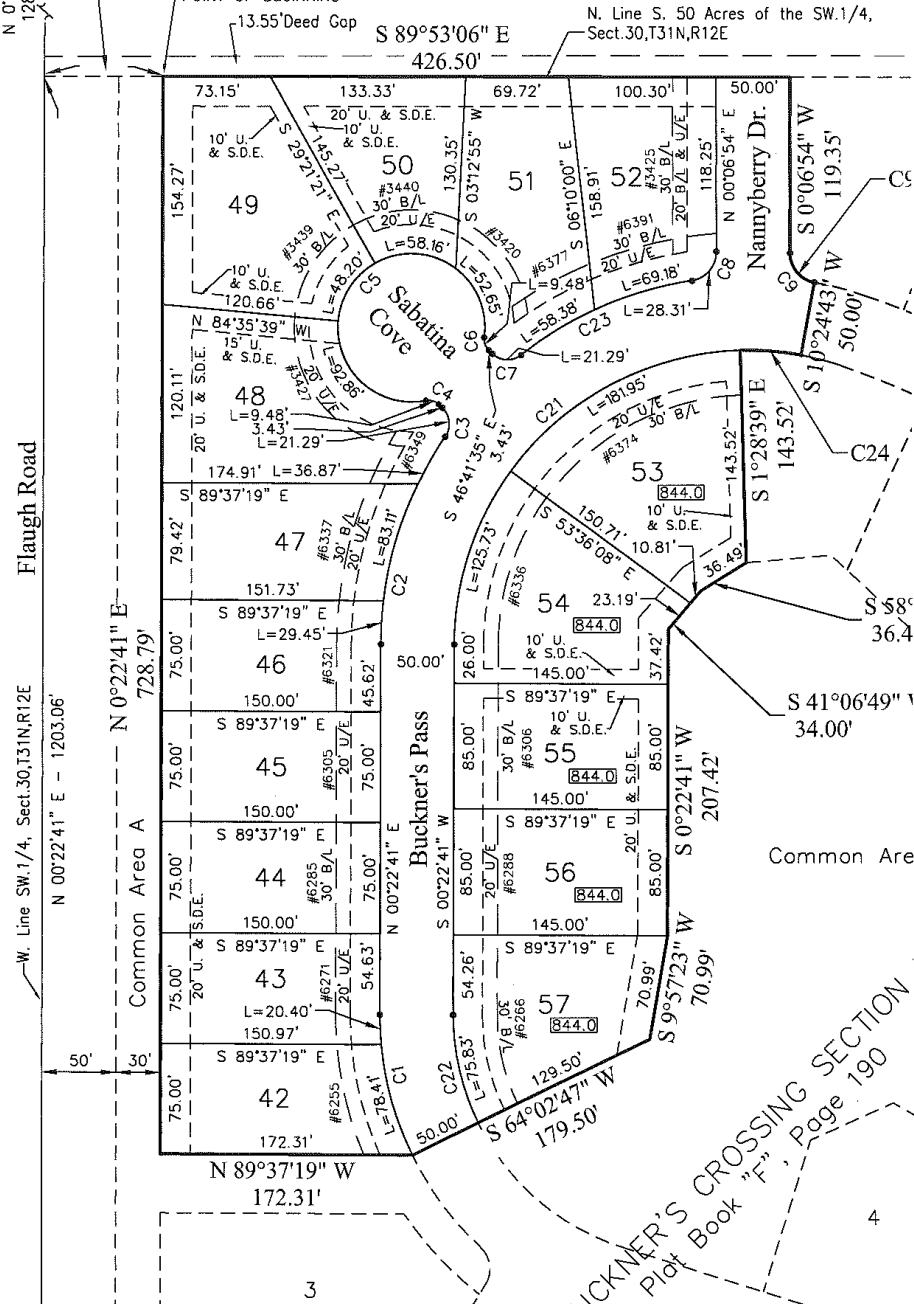


# Buckner's Crossing Sec II

Yarnelle

Doc.#86-052068

1/4 R12E lush) story



Flough Road

W. Line SW.1/4, Sect.30,T31N,R12E  
N 0°22'41" E - 1203.06'

Common Area A  
N 0°22'41" E  
728.79'

Buckner's Pass

Common Area

BUCKNER'S CROSSING SECTION  
Plot Book "F", Page 190  
4